

INSTRUCTIONS**Parts Included:**

1. Radiator o-rings (2)
2. ThermoValve Assembly
3. Bottom Plate Seal (Square Cut)
4. Spool Assembly
5. Bottom Plate Plug w/o-ring

Tools Required:

- Davco Collar Wrench (PN 380134)
- 3/16" Hex key
- 1 5/16" Box end wrench
- 3/8" Diameter punch to rod
- Rubber mallet

Disassembly

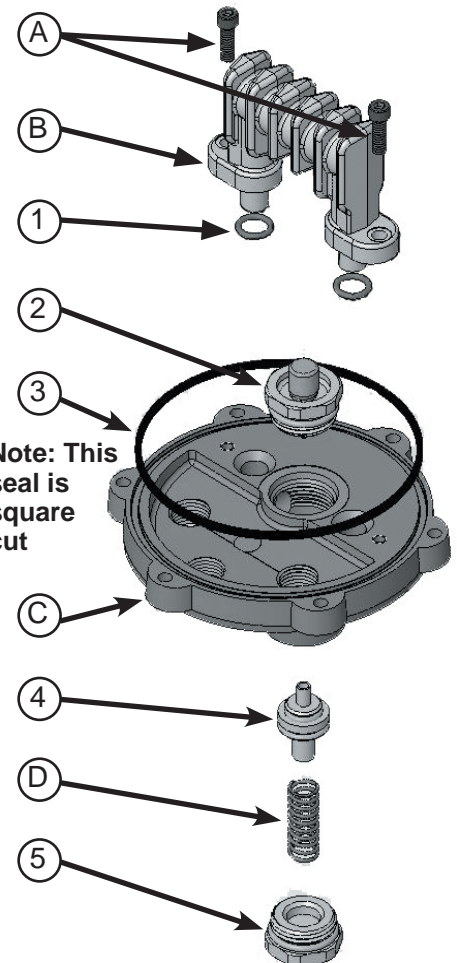
1. Drain 382 Fuel Pro® completely, dispose of fuel in environmentally safe manner.
2. Using a Hex Key remove bottom plate (C).
3. Using hex key, remove 1/4"-20 bolts (A) from radiator. Remove Radiator seals (1) from the bottom of each Radiator leg. Dispose of seals; retain Radiator (B) for later use.
4. Using box end wrench, remove and dispose of ThermoValve (2).
5. Using box end wrench, remove and dispose of Bottom Plate Plug (5); keep Spool Spring (D) for later use.
Caution: Bottom Plate Plug is spring loaded, use care when disassembling!
6. Using punch and rubber mallet, carefully remove and dispose of Spool (4).
7. Remove and dispose of bottom plate seal (3).
8. Clean o-ring sealing surfaces as needed.
Note: Use caution when cleaning to ensure sealing surfaces are not damaged.

Assembly

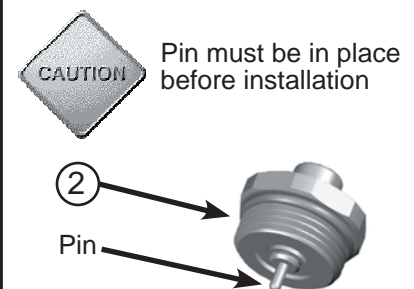
1. Carefully press new Spool into Bottom Plate, smaller diameter end goes in first.
2. Place Spool Spring on end the Spool, install Bottom Plate Plug compressing Spool Spring. Tighten to 15 - 30 ft lbs.
3. Install new ThermoValve. Tighten to 15 - 30 ft lbs.
Note: Ensure Pin is installed in the bottom of the ThermoValve (See Detail).
4. Install new Radiator Seals on Radiator. Install Radiator on Bottom Plate using 1/4"-20 screws. Tighten to 14 ft lbs.
5. Install Bottom Plate Seal (Square Cut) on Bottom Plate. Reinstall Bottom Plate on Fuel Pro. Tighten bolts to 10 ft lbs.
6. Fill Fuel Pro with fuel, start engine and run at high idle for 30 seconds.

Additional Kits

For additional kits contact DAVCO customer service at 800-328-2611 or customerservice@davcotec.com. Reference O-Ring kits part number 382124-1.



Approximate Service Time: 15 minutes

ThermoValve Detail

If the ThermoValve gets too warm, the Pin may be forced out of the Bushing. To reinstall, place ThermoValve under cold water for 15 - 30 seconds before re-inserting the pin.

INSTRUCTIONS**Parts Included:**

1. Radiator o-rings (2)
2. ThermoValve Assembly
3. Bottom Plate o-ring
4. Spool Assembly
5. Bottom Plate Plug w/o-ring

Tools Required:

- Davco Collar Wrench (PN 380134)
 3/16" Hex key
 1 5/16" Box end wrench
 3/8" Diameter punch to rod
 Rubber mallet

Disassembly

1. Drain 382 Fuel Pro[®] completely, dispose of fuel in environmentally safe manner.
2. Using collar wrench, remove collar and bottom plate (C).
3. Using hex key, remove 1/4"-20 bolts (A) from radiator. Remove Radiator seals (1) from the bottom of each Radiator leg. Dispose of seals; retain Radiator (B) for later use.
4. Using box end wrench, remove and dispose of ThermoValve (2).
5. Using box end wrench, remove and dispose of Bottom Plate Plug (5); keep Spool Spring (D) for later use.

Caution: Bottom Plate Plug is spring loaded, use care when disassembling!

6. Using punch and rubber mallet, carefully remove and dispose of Spool (4).
7. Remove and dispose of bottom plate o-ring (3).

8. Clean o-ring sealing surfaces as needed.

Note: Use caution when cleaning to ensure sealing surfaces are not damaged.

Assembly

1. Carefully press new Spool into Bottom Plate, smaller diameter end goes in first.
2. Place Spool Spring on end the Spool, install Bottom Plate Plug compressing Spool Spring. Tighten to 15 - 30 ft lbs.

3. Install new ThermoValve. Tighten to 15 - 30 ft lbs.

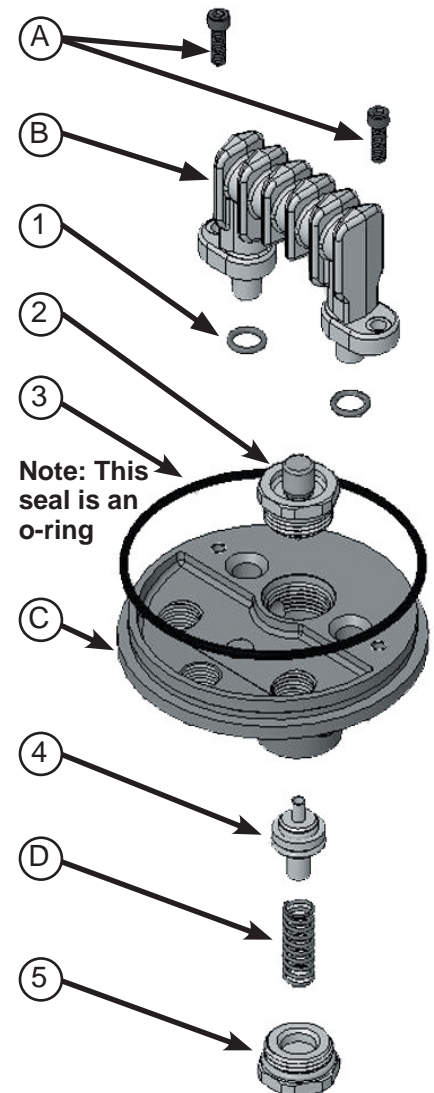
Note: Ensure that the Pin is installed in the bottom of the ThermoValve (See Detail).

4. Install new Radiator Seals on Radiator. Install Radiator on Bottom Plate using 1/4"-20 screws. Tighten to 14 ft lbs.

5. Install Bottom Plate **O-Ring** on Bottom Plate. Reinstall Bottom Plate on Fuel Pro. Tighten collar to 50 - 60 ft lbs.

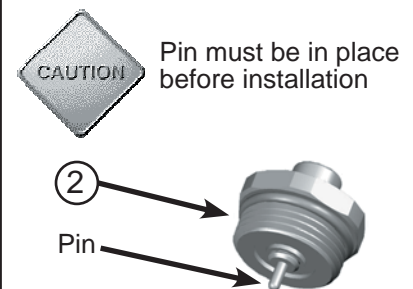
Note: The use of 2-3 drops of Loctite[®] 406 is recommended to secure the bottom collar.

6. Fill Fuel Pro with fuel, start engine and run at high idle for 30 seconds.



Note: This seal is an o-ring

Approximate Service Time: 15 minutes

ThermoValve Detail

If the ThermoValve gets too warm, the Pin may be forced out of the Bushing. To reinstall, place ThermoValve under cold water for 15 - 30 seconds before re-inserting the pin.

Additional Kits

For additional kits contact DAVCO customer service at 800-328-2611 or customerservice@davcotec.com. Reference O-Ring kits part number 382124-1.