

Item in Figure 1	Kit # 382029SVCB-1 Parts Included (See Figure 1)	Tools Required
1	Bottom plate seal	3/16" hex key
2	Bottom plate assembly	
3	Bottom plate screws (6)	
	½" NPT plugs (not shown)	

**Disassembly**

**Step 1:** Drain the Fuel Pro 382 completely. Dispose of the fuel in an environmentally safe manner.

**Step 2:** Remove the fluid hoses and fittings.

**Step 3:** Remove the drain valve, and if applicable, remove the pre-heater and WIF probe/plug.

**Step 4:** Using a hex key, remove and dispose of the six (6) screws on the bottom plate and the bottom plate seal.

**Assembly**

**Step 1:** Install the bottom plate seal (square cut) on the bottom plate. Install the replacement bottom plate on the Fuel Pro. Tighten the screws to 10 ft-lbs.

**Step 2:** Replace the drain valve. Replace the pre-heater and/or WIF if applicable.

**Step 3:** Install plugs into any unused ports on the bottom plate.

**Step 4:** Fill the Fuel Pro with fuel to the top of the clear cover. Install the vent cap. Hand tighten.

**Step 5:** Start the engine and run at high-idle for one minute. With the engine still running, slowly open the vent cap until the fuel level drops to one inch above the collar. Hand tighten the vent cap.

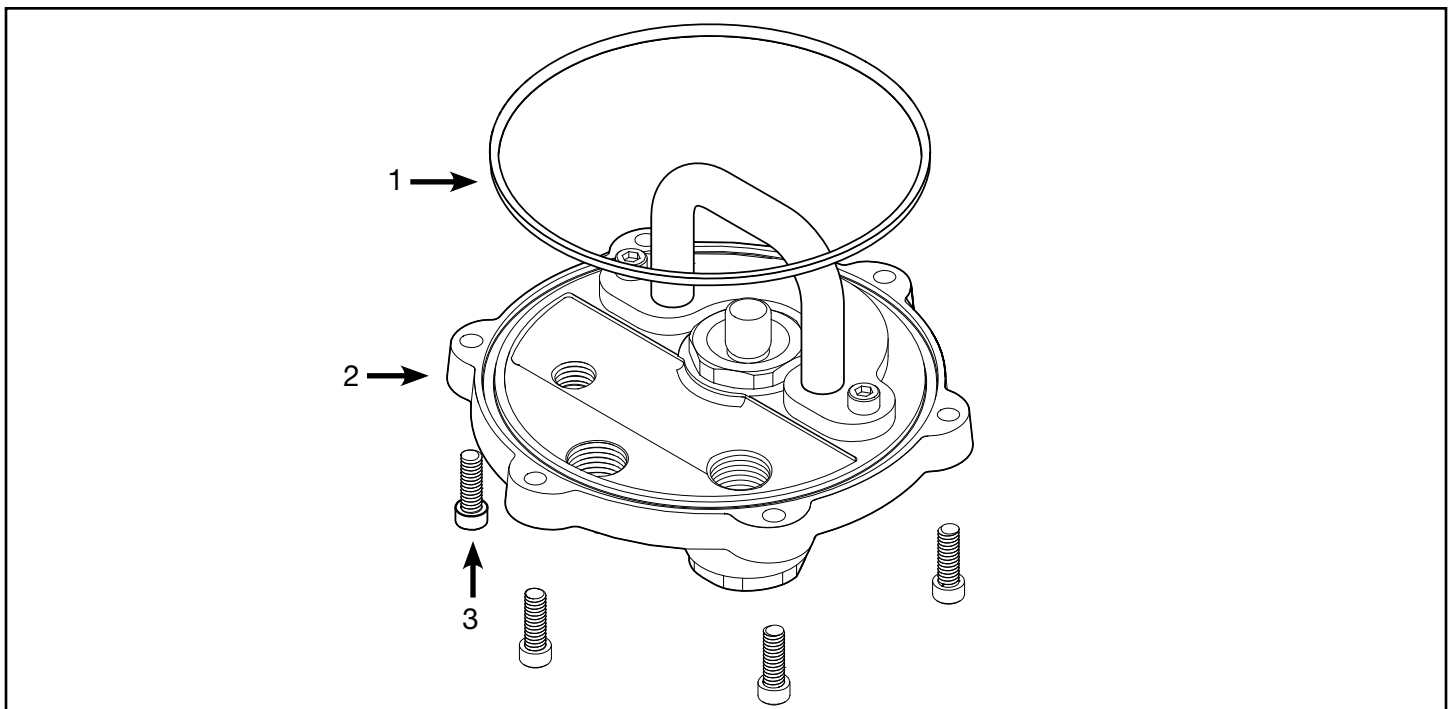


Figure 1